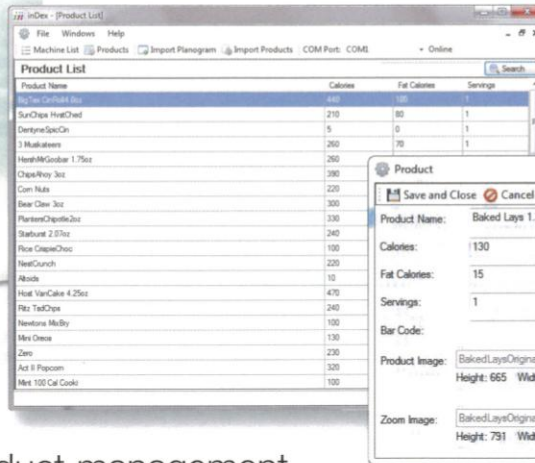




Nutritional and Machine Data Exchange Tool

Nutritional & Machine Data Exchange Tool



Adding new products is simple with straight forward data screens.

Upload/Download from Handheld DEX Devices.



inDEX is a new product management tool from USI designed to address the need for displaying product calorie information to your customer.

inDEX allows you to develop a comprehensive database of your products and remotely planogram each of your machines with it's own unique product list by selection with calorie information, pricing & promotions.

Affords operator increased flexibility

- Off site/remote planogramming of products by selection including:
 - Product nutritional information
 - Product promotions & advertising
 - Remote pricing
- Machine DEX information upload & download via USB memory stick to iCart touch screens
- Mobile hand held or direct DEX uploads to two line LCD displays on compatible USI machines

How to Get It!

Available on Avanti's AVS Line of Machines

1-800-822-9686

The one year single-user software license gives access to software downloads as well as use of the iCart online Screen Creation & Editing Utility.



iCART

Built-in, full color 7" LCD touch screen replaces traditional keypad and display

- Customer interface and operator control/programming of machine
- Used in conjunction with inDEX tool
- Communicates nutritional content of products in a simple and quick format



Optional Touch Screen Interface



Display product & nutritional information, service messages, advertising and even Combo Vend cross selling specials.